

# Volusia County Property Appraiser's Office

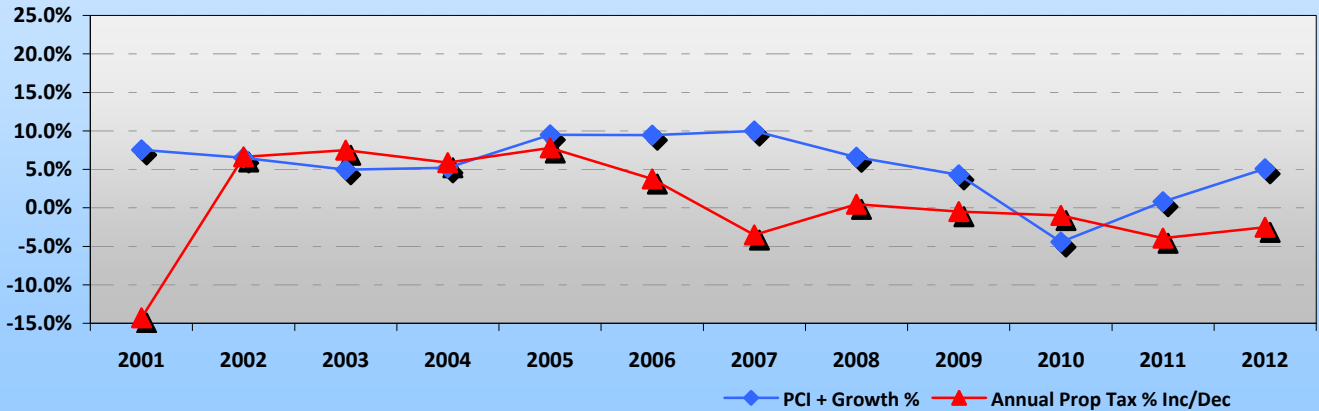
## 2001 Final Thru 2012 Final Roll - PCI to Tax Roll & Taxes Levied Increases

Tax Roll Year	Budget	Taxable Value	New Const Taxable Value	Amt of \$\$ Taxes Levied Inc/Dec	% Inc/Dec in Tax Roll	Prior Calendar Yr PCI	Growth %	PCI + Growth %	Annual Prop Tax % Inc/Dec
2001	5,425,823	17,287,759,955	446,798,312	-904,972	8.2%	4.95%	2.6%	7.5%	-14.3%
2002	5,784,349	18,924,968,415	556,849,842	358,526	9.5%	3.55%	2.9%	6.5%	6.6%
2003	6,217,959	21,540,707,794	661,290,488	433,610	13.8%	1.89%	3.1%	5.0%	7.5%
2004	6,583,414	24,720,622,415	795,896,095	365,455	14.8%	1.98%	3.2%	5.2%	5.9%
2005	7,095,488	29,790,710,206	984,510,615	512,074	20.5%	6.20%	3.3%	9.5%	7.8%
2006	7,360,363	38,066,969,018	1,000,879,793	264,875	27.8%	6.84%	2.6%	9.5%	3.7%
2007	7,100,182	40,797,584,589	1,340,448,837	-260,181	7.2%	6.70%	3.3%	10.0%	-3.5%
2008	7,134,057	36,494,978,332	1,008,228,551	33,875	-10.5%	3.81%	2.8%	6.6%	0.5%
2009	7,100,001	30,151,455,638	420,779,224	-34,056	-17.4%	2.88%	1.4%	4.3%	-0.5%
2010	7,031,346	26,182,716,383	212,198,845	-68,655	-13.2%	-5.26%	0.8%	-4.4%	-1.0%
2011	6,753,167	24,030,945,998	156,017,155	-278,179	-8.2%	0.15%	0.6%	0.8%	-4.0%
2012	6,581,933	23,649,569,861	149,755,459	-171,234	-1.6%	4.47%	0.6%	5.1%	-2.5%
<b>2001 - 2012</b>	<b>21.3%</b>	<b>36.8%</b>	<b>7,733,653,216</b>	<b>251,138</b>	<b>50.8%</b>	<b>38.16%</b>	<b>27.3%</b>	<b>65.4%</b>	<b>6.2%</b>

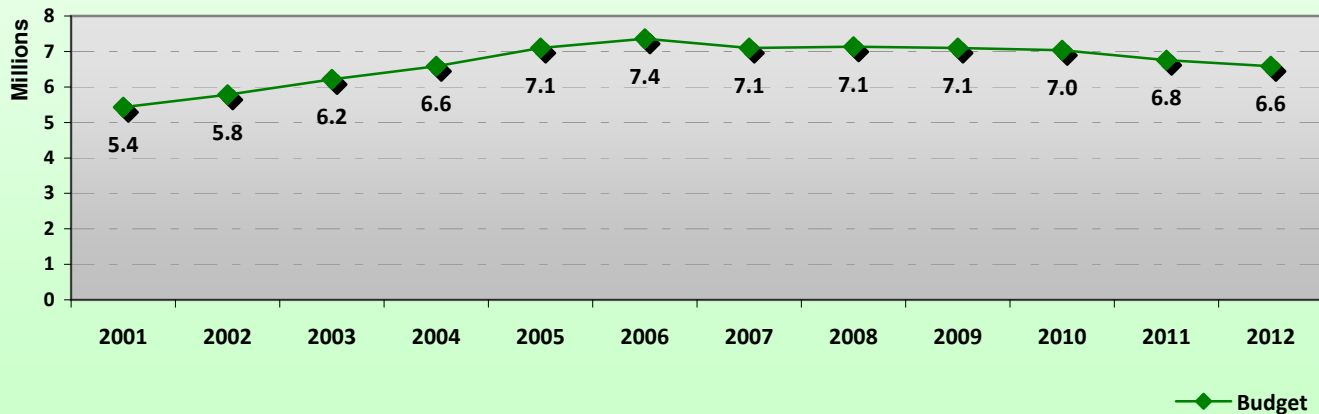
% Increase in Tax Roll includes New Construction for each year

**[Total Annual] Tax Increase / PCI+Growth = -90.5%**

### Percentage Change 2001-2012



### Budget 2001-2012



Source: Morgan B. Gilreath, Jr., Property Appraiser