

Florida Inland Navigation District

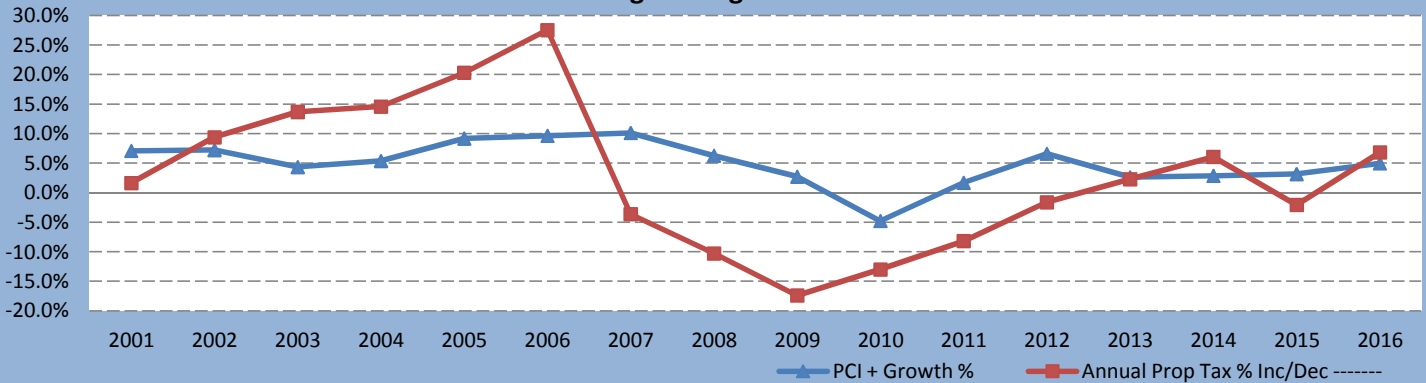
2001 Final Through 2016 Final After VAB - PCI to Tax Roll & Taxes Levied Increases

Tax Roll Year	Property Taxes Levied	Taxable Value	New Const Taxable Value	Amt of \$\$ Taxes Levied Inc/Dec	% Inc/Dec in Tax Roll	Prior Calendar Yr PCI	Growth %	PCI + Growth %	Annual Prop Tax % Inc/Dec
2001	675,335	17,541,162,376	446,798,312	10,949	8.2%	4.53%	2.5%	7.1%	1.6%
2002	738,718	19,187,479,303	556,849,842	63,383	9.4%	4.33%	2.9%	7.2%	9.4%
2003	839,784	21,812,579,151	661,290,488	101,066	13.7%	1.32%	3.0%	4.4%	13.7%
2004	962,337	24,995,770,922	795,896,095	122,553	14.6%	2.20%	3.2%	5.4%	14.6%
2005	1,157,845	30,073,908,112	984,510,615	195,508	20.3%	5.91%	3.3%	9.2%	20.3%
2006	1,476,625	38,353,888,285	1,000,879,793	318,780	27.5%	7.03%	2.6%	9.6%	27.5%
2007	1,423,041	41,247,558,469	1,340,448,837	-53,584	7.5%	6.86%	3.2%	10.1%	-3.6%
2008	1,276,621	37,003,506,152	1,008,228,551	-146,420	-10.3%	3.54%	2.7%	6.3%	-10.3%
2009	1,054,390	30,562,014,607	416,927,555	-222,231	-17.4%	1.36%	1.4%	2.7%	-17.4%
2010	917,387	26,590,935,214	212,198,845	-137,003	-13.0%	-5.57%	0.8%	-4.8%	-13.0%
2011	842,252	24,413,090,690	157,139,101	-75,136	-8.2%	1.05%	0.6%	1.7%	-8.2%
2012	828,666	24,019,316,690	150,275,748	-13,585	-1.6%	5.97%	0.6%	6.6%	-1.6%
2013	847,743	24,572,267,249	142,311,610	19,077	2.3%	2.03%	0.6%	2.6%	2.3%
2014	899,106	26,061,052,144	213,548,084	51,363	6.1%	2.04%	0.8%	2.9%	6.1%
2015	880,403	27,512,599,218	311,392,270	-18,703	5.6%	2.03%	1.1%	3.2%	-2.1%
2016	940,449	29,389,033,810	355,907,041	60,046	6.8%	3.75%	1.2%	5.0%	6.8%
2001 - 2016	39.3%	67.5%	8,754,602,787	276,063	71.6%	48.38%	30.7%	79.1%	46.1%

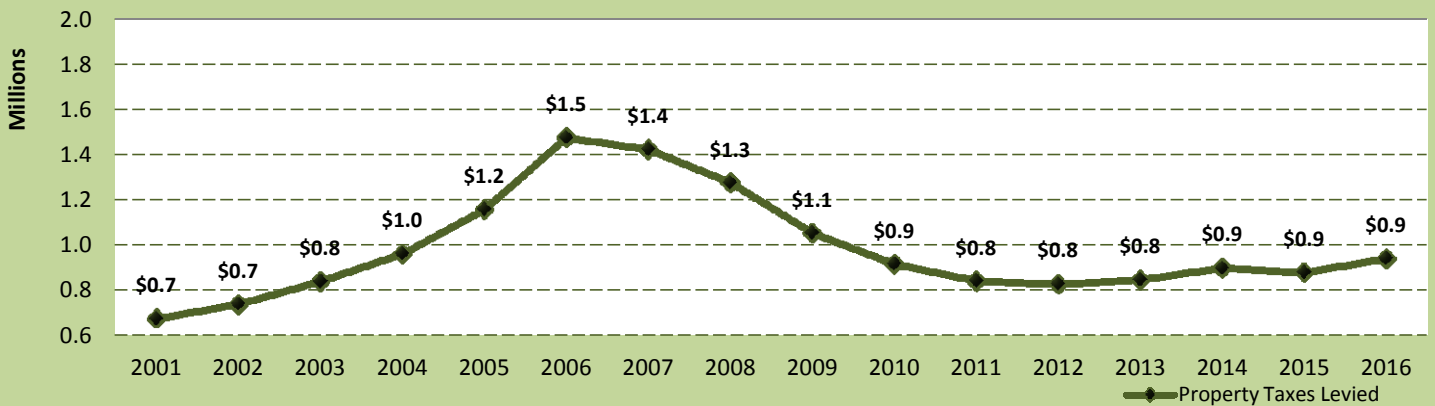
% Increase in Tax Roll includes New Construction for each year

[Total Annual] Tax Increase / PCI+Growth = -41.7%

Florida Inland Navigation District Percentage Change 2001-2016



Florida Inland Navigation District Property Tax (Revenues Levied) 2001-2016



Source: Larry Bartlett, J.D., Volusia County Property Appraiser

St. Johns Water Management District

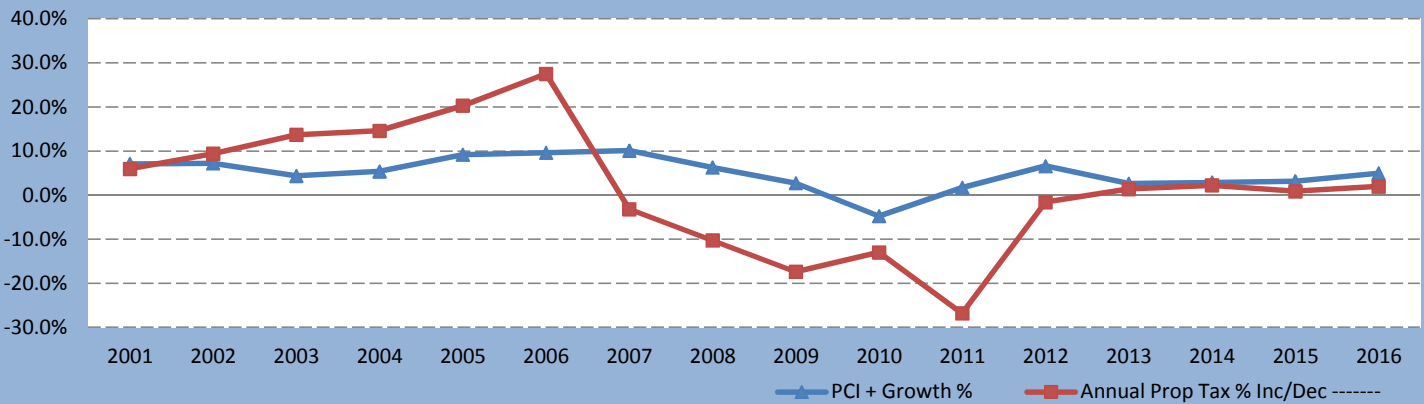
2001 Final Through 2016 Final After VAB - PCI to Tax Roll & Taxes Levied Increases

Tax Roll Year	Property Taxes Levied	Taxable Value	New Const Taxable Value	Amt of \$\$ Taxes Levied Inc/Dec	% Inc/Dec in Tax Roll	Prior Calendar Yr PCI	Growth %	PCI + Growth %	Annual Prop Tax % Inc/Dec
2001	8,104,017	17,541,162,376	446,798,312	455,476	8.2%	4.53%	2.5%	7.1%	6.0%
2002	8,864,615	19,187,479,303	556,849,842	760,598	9.4%	4.33%	2.9%	7.2%	9.4%
2003	10,077,412	21,812,579,151	661,290,488	1,212,797	13.7%	1.32%	3.0%	4.4%	13.7%
2004	11,548,046	24,995,770,922	795,896,095	1,470,634	14.6%	2.20%	3.2%	5.4%	14.6%
2005	13,894,146	30,073,908,112	984,510,615	2,346,100	20.3%	5.91%	3.3%	9.2%	20.3%
2006	17,719,496	38,353,888,285	1,000,879,793	3,825,350	27.5%	7.03%	2.6%	9.6%	27.5%
2007	17,150,735	41,247,558,469	1,340,448,837	-568,761	7.5%	6.86%	3.2%	10.1%	-3.2%
2008	15,386,058	37,003,506,152	1,008,228,551	-1,764,677	-10.3%	3.54%	2.7%	6.3%	-10.3%
2009	12,707,686	30,562,014,607	416,927,555	-2,678,372	-17.4%	1.36%	1.4%	2.7%	-17.4%
2010	11,056,511	26,590,935,214	212,198,845	-1,651,175	-13.0%	-5.57%	0.8%	-4.8%	-13.0%
2011	8,088,057	24,413,090,690	157,139,101	-2,968,454	-8.2%	1.05%	0.6%	1.7%	-26.8%
2012	7,957,600	24,019,316,690	150,275,748	-130,457	-1.6%	5.97%	0.6%	6.6%	-1.6%
2013	8,067,075	24,572,267,249	142,311,610	109,476	2.3%	2.03%	0.6%	2.6%	1.4%
2014	8,245,717	26,061,052,144	213,548,084	178,642	6.1%	2.04%	0.8%	2.9%	2.2%
2015	8,317,059	27,512,599,218	311,392,270	71,342	5.6%	2.03%	1.1%	3.2%	0.9%
2016	8,478,736	29,389,033,810	355,907,041	161,678	6.8%	3.75%	1.2%	5.0%	1.9%
2001 - 2016	4.6%	67.5%	8,754,602,787	830,195	71.6%	48.38%	30.7%	79.1%	25.5%

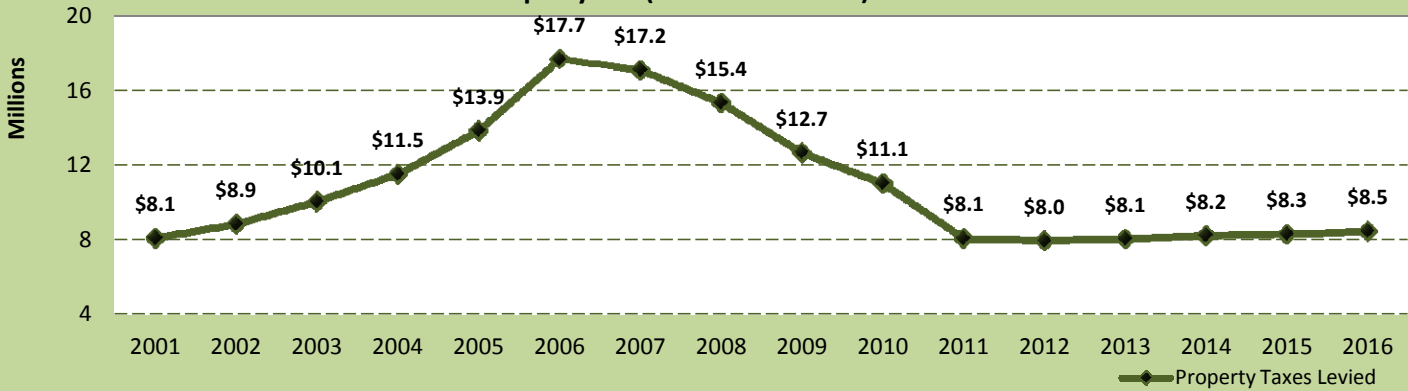
% Increase in Tax Roll includes New Construction for each year

[Total Annual] Tax Increase / PCI+Growth = -67.8%

St. Johns Water Management District Percentage Change 2001-2016



St. Johns Water Management District Property Tax (Revenues Levied) 2001-2016



Source: Larry Bartlett, J.D., Volusia County Property Appraiser